

Ts'a'am Sgénuwaas
Tllga jii.nga sda k'uust'an k'inhlgahl

Invasive European Green Crab Response Program Report 2022

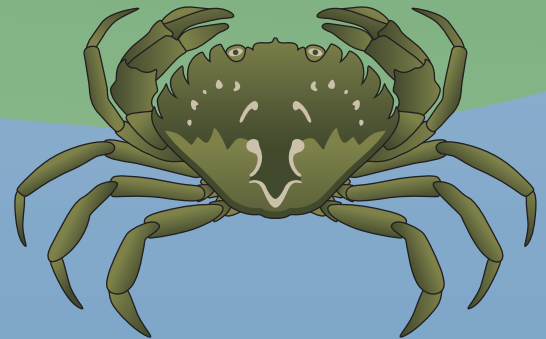
In 2021, CHN secured a 3-year fund for the response to this invasive crab. The 2022 field season took place between May and November.

Range in size

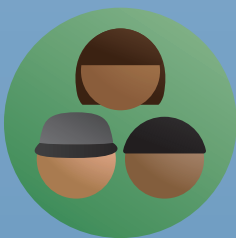
1.5 - 8.4 cm



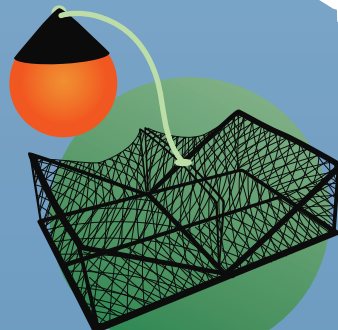
Of all crabs found, 67% were male and 33% were female.



31,236 trapped



51 field crew members



12,956 traps set

- ◆ Surveyed, crabs found
- Surveyed, no crabs found

*Survey sites displayed here represent approximate locations where traps were deployed, for illustrative purposes.

Report a sighting : invasives@haidanation.com



HAIDA NATION

Funded by:



Fisheries and Oceans
Canada

Pêches et Océans
Canada

